



Replay & Reporting

Replay and Reporting turns historical AIS data into actionable insights. The replay feature enables real-time playback for in-depth incident investigation and documentation, while reporting provides in-depth data extraction, density plots, and custom analysis.

Together, these capabilities equip maritime operators with data-driven insights to optimize vessel traffic management and operational efficiency.

Incident Investigation & Proof

Quickly reconstruct events such as collisions, groundings, or suspicious activities by replaying vessel movements and extracting key data for analysis or legal documentation in court filings.

Data-Driven Decision Making

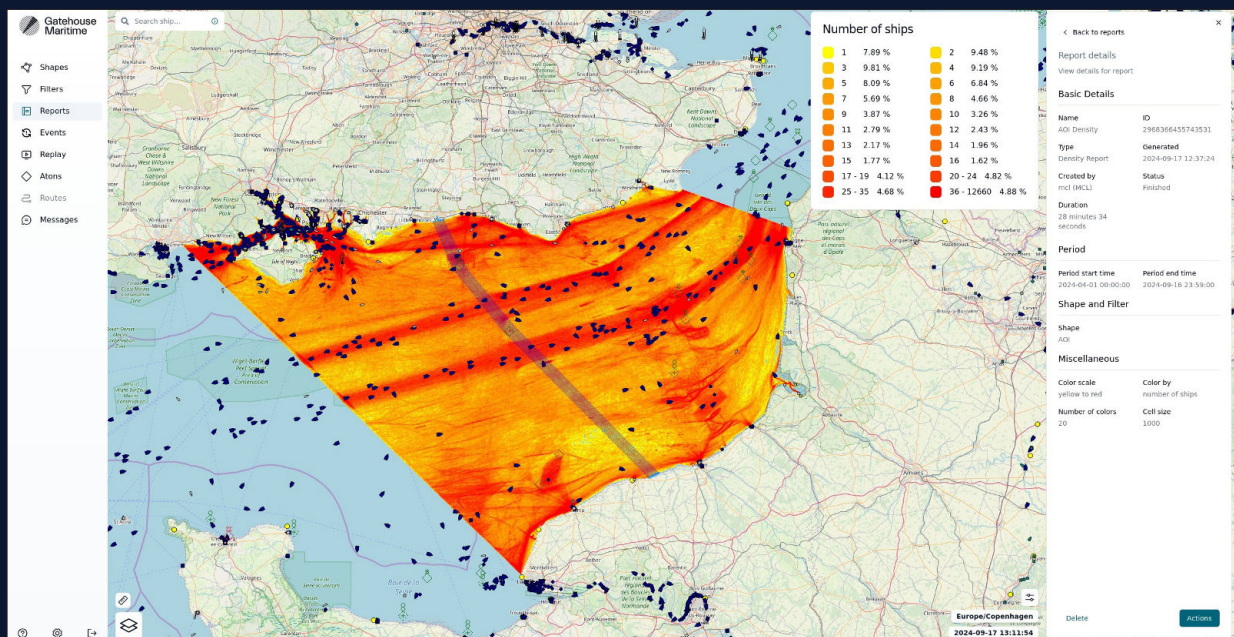
Gain insights into traffic density, route patterns, and infrastructure usage, aiding in the planning of traffic separation zones and optimal asset placement.

Shared Insights

Easily export and share replay videos and reports to ensure a common understanding of past events across teams or organizations

Uncover Hidden Patterns at Sea

Turn AIS data into powerful visual insights with dynamic density plots, identify traffic hotspots, optimize routes, and make confident, data-driven maritime decisions at a glance.



Feature Highlights & Technical Details

Replay Features

- **Interactive Timeline:** Watch vessel movements over a selected time range at speeds from 1x (real-time) up to 64x (hyper speed).
- **Pause & Resume:** Easily freeze the action to examine a specific moment
- **Video Export:** Export replays as MP4 or WMV, with customizable resolution, video quality, map style and customized speed in segments for a tailored viewing experience.

Reporting Features

- **Report Templates:** Explore a variety of standard reports such as density plots, historical track of SOG, ship to ship incidents, coverage analysis, area-based or line-crossing counts and many more.
- **Input:** Easily define time range, geographic area, vessel type, ship lists, and more with smart auto-suggestions for faster setup.
- **Scheduling & Notifications:** Automate reports with adjustable time intervals such as weekly or monthly; and receive email alerts once they're ready.

- **Cloning:** Quickly duplicate existing reports to modify parameters like for example cargo vessel filtering without the need to reconfigure everything from scratch.
- **Customization:** Fine-tune your report after generation to instantly adjust elements like color range or number of colors, ensuring the visuals effectively highlight key insights.
- **Output Formats:** Export reports as PDF, CSV, Excel, Shapefile or ZIP file.

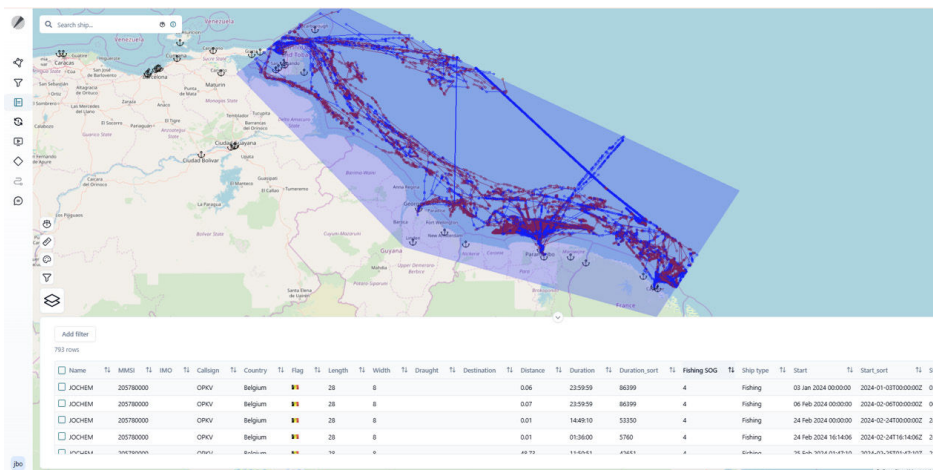
Implementation

- **Maritime Domain Monitor:** Required for map-based visualization.
- **On-Premises or Cloud-based:** Deploy on local servers or in a cloud-based environment, depending on organizational needs and security requirements.

Training & Support

Gatehouse Maritime works closely with clients to ensure smooth deployment and integration into existing workflows. Customers can expect:

- Tailored training sessions for operators and administrators
- Flexible support packages, ranging from email troubleshooting to 24/7 service
- Ongoing updates and enhancements



Fishing Vessels Tracks in Maritime Domain Monitor

Ready to explore? Learn more, watch the demo, or try it out today.

Visit our website or reach out to dive further into our products or to have us set up a demo or trial.

gatehousemaritime.com
info@gatehousemaritime.com | +45 7020 1909

