

# Advanced Analytics

**Advanced Analytics** taps into historical data and sophisticated algorithms to predict vessel ETAs, upcoming port calls, and potential incoming vessels. These predictive insights empower maritime operators to make informed decisions on routing, delay risk assessments, and resource allocation, significantly enhancing operational efficiency.

## Data-Driven Operational Planning

With precise visibility into vessel destinations and arrival times, maritime operators can improve port call scheduling, workforce planning, and berth allocation. By anticipating vessel movements, they reduce idle time, optimize cargo handling, and proactively manage contingencies to prevent delays.

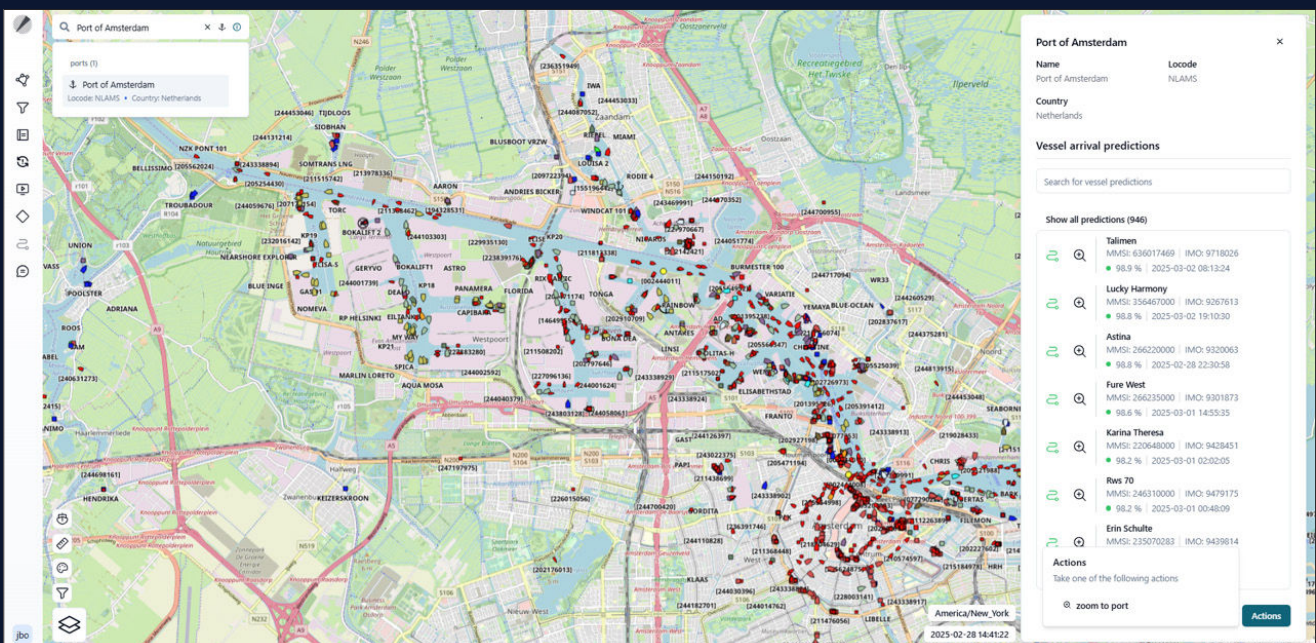
These insights also enhance stakeholder coordination, from harbor pilots and terminal operators to customs officials and supply chain partners.

## Flexible Access

Use Advanced Analytics directly in the intuitive Maritime Domain Monitor map interface for visual insights. Scalable and adaptable, it integrates seamlessly with standalone setups and enterprise solutions, enabling maritime organizations to leverage predictive intelligence on their terms.

## Predictive Insights with Machine Learning

Powered by advanced supervised machine learning and built on over a decade of AIS data, Advanced Analytics supports over 1,200 ports worldwide. Harnessing millions of unique observations, it delivers unmatched predictive accuracy and actionable insights.



# Feature Highlights & Technical Details

## Advanced Analytics

- **Next Port Call Probability:** Access a ranked list of a vessel's most likely destinations, complete with confidence scores, powered by advanced analytics and independent of manually entered AIS next port call data.
- **Interactive Map:** Navigate easily to any predicted port directly on Maritime Domain Monitor's map interface.
- **Route Visualization:** Instantly see the anticipated track on-screen for each probable destination.
- **Customizable Destination Types:** Calculate ETAs to ports, user-defined area, or single points.
- **Status Indicators:** Automatic detection of expired or completed ETAs, helping avoid duplicate or conflicting calculations.
- **Easy Management:** Track active ETAs, delete outdated ones, or run simultaneous ETAs for multiple vessels at once.

## Implementation

- **Maritime Domain Monitor:** Required for map-based visualization.
- **API Access:** For direct integration into existing systems.
- **On-Premises or Cloud-based:** Deploy on local servers or in a cloud-based environment, depending on organizational needs and security requirements.

## Training & Support

Gatehouse Maritime works closely with clients to ensure smooth deployment and integration into existing workflows. Customers can expect:

- Tailored training sessions for operators and administrators
- Flexible support packages, ranging from email troubleshooting to 24/7 service
- Ongoing updates and enhancements

Name	Locode
Port of Amsterdam	NLAMS
Country Netherlands	

Vessel arrival predictions	
Search for vessel predictions	
Show first fifteen (15) predictions	
Med Canary	MMSI: 215498000   IMO: 9544358 98.6 %   2025-03-28 00:36:28
Atlantis Almeria	MMSI: 248483000   IMO: 9508093 98.3 %   2025-03-29 01:04:24
Kirkeholm	MMSI: 355320000   IMO: 9553402 98.1 %   2025-03-29 11:27:23
Bagshot	MMSI: 256904000   IMO: 9938987 97.9 %   2025-03-28 22:14:22
Yasa Swan	MMSI: 538008271   IMO: 9857248 96.9 %   2025-04-14 04:05:34
Sarah-b	MMSI: 218836000   IMO: 9119622 96.5 %   2025-03-27 10:46:15
Viking Eir	MMSI: 269057494   IMO: 7002021 96.2 %   2025-03-27 21:10:59
Marlin Ametrine	MMSI: 538005804   IMO: 9697234 96.0 %   2025-03-28 06:54:19
Willem Van Der Zwan	MMSI: 246429000   IMO: 9187306 95.7 %   2025-03-31 17:58:19
Great Antwerp	MMSI: 247451500   IMO: 9935014 95.7 %   2025-04-01 21:53:12
Bit Wave	MMSI: 246478000   IMO: 9904041 95.3 %   2025-03-28 08:26:45
Pirin	MMSI: 256562000   IMO: 9381861 94.7 %   2025-04-05 21:54:18
Hydrograaf	MMSI: 538008271   IMO: 9857248

Vessel Arrival Predictions in Maritime Domain Monitor

Ready to explore? Learn more, watch the demo, or try it out today.

Visit our website or reach out to dive further into our products or to have us set up a demo or trial.

gatehousemaritime.com  
info@gatehousemaritime.com | +45 7020 1909

