



Maritime Domain Monitor

Maritime Domain Monitor (MDM) is a web-based platform that empowers maritime professionals with real-time and historical maritime target monitoring, intelligent filtering, and customizable visualizations. Designed to seamlessly aggregate various data sources such as terrestrial and satellite AIS data, radar, LRIT, and other geospatial data sources.

MDM is more than just a vessel tracking platform, it is a strategic tool for comprehensive maritime domain awareness. With intuitive information grouping, detailed assistance, and interactive tooltips, MDM delivers a user-friendly experience for maritime monitoring, decision support, and security.

One Platform, Endless Possibilities

MDM acts as your primary maritime domain awareness platform, integrating seamlessly with other Gatehouse Maritime products such as Replay and Reporting, Event Alerting, Advanced Analytics, and Extended Vessel Information. Whether you

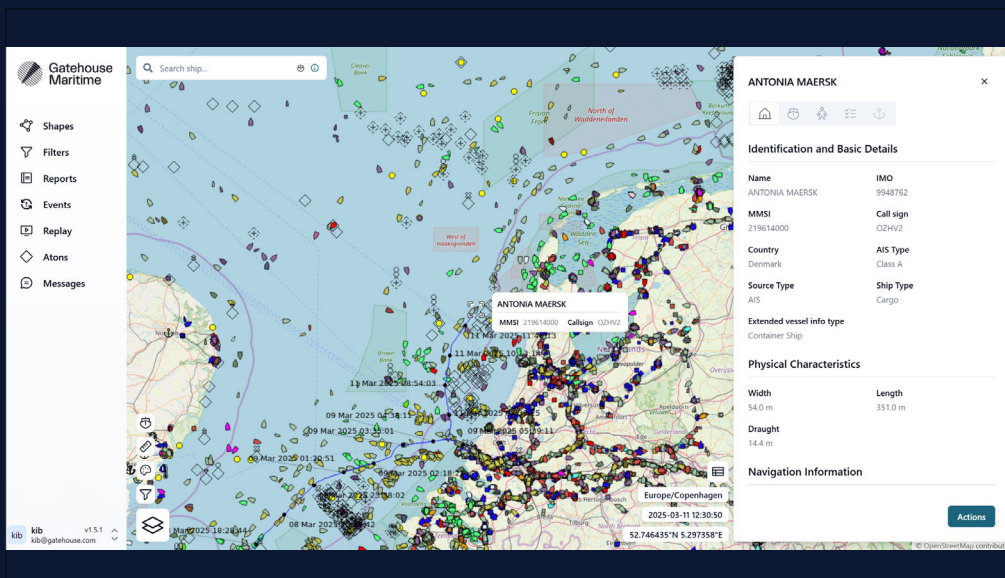
need to monitor your exclusive economic zones, area of interest, or critical maritime infrastructure MDM provides unparalleled situational awareness.

Turning Maritime Data into Actionable Insights

Leverage advanced customization options to cut through the noise and focus on critical tasks for optimized maritime operations. With powerful filtering, WMS layers, geofencing, and customizable views, you can refine insights to meet your specific needs.

Scalable and Secure

Built to support commercial and governmental organizations of any size, our platform ensures both scalability and robust security. With advanced user control settings, Multi-Factor Authentication and Single Sign-On, access to sensitive systems remains protected, reducing the risk of credential-based attacks while maintaining seamless usability.



Unlock the full potential of maritime intelligence

Maritime Domain Monitor is more than a vessel tracking platform, it's a strategic tool for maritime domain awareness. Whether used independently or in combination with other Gatehouse Maritime Applications, MDM provides a powerful and user-friendly environment for real-time monitoring, decision support, and maritime security.

Feature Highlights & Technical Details

Key Functionalities

- Monitor real-time and historical track of vessels
- Interactive world map showing vessels, base stations, Methydro data and Aids to Navigations (AtoNs)
- Open Street Map or S-57 as base maps layer
- Easy control and toggle between data and information layers
- Create and adjust basic WMS layers and vector tiles for custom map visualization
- View static and dynamic information on vessels, Methydro data and AtoNs
- Creation, import and export of geofences
- Upload of ship list for white- or blacklisting of vessels, or focused fleet monitoring
- Filtering on vessel categories, name, ship lists, by geofence or other parameters
- Calculated ETA based on user-defined input

Dependencies

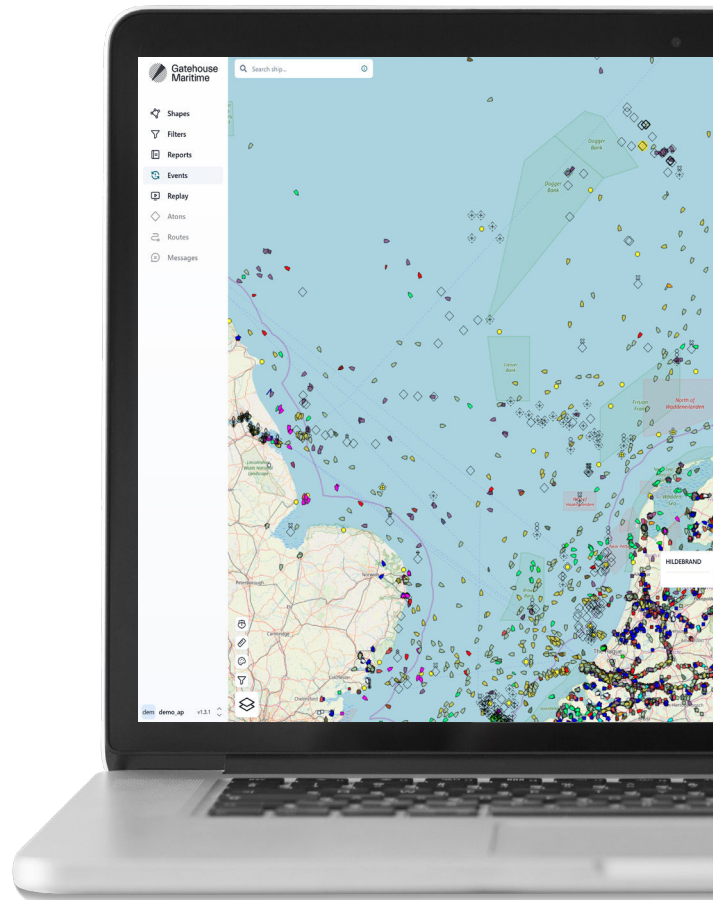
Maritime Domain Monitor functions as a standalone application.

For enhanced capabilities, additional Gatehouse Maritime products such as Replay and Reporting, Event Alerting, Advanced Analytics, and Extended Vessel Information can be integrated based on your specific requirements.

Implementation & Support

Gatehouse Maritime collaborates closely with clients to ensure seamless deployment and integration into existing workflows. Our comprehensive support includes:

- Customized sessions for operators and administrators to maximize efficiency.
- Options ranging from email troubleshooting to 24/7 assistance.
- Regular improvements to keep systems optimized and up to date.



Ready to explore? Learn more, watch the demo, or try it out today.

Visit our website or reach out to dive further into our products or to have us set up a demo or trial.

gatehousemaritime.com
info@gatehousemaritime.com | +45 7020 1909

