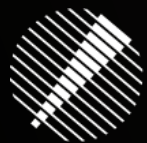


# Exposing Maritime Threats

Preventing Subsea Cable Damage  
and Dark Fleet Intrusions

Live webinar | March 2025



Gatehouse  
Maritime

# Today's Agenda

- **Welcome to Gatehouse Maritime**
- **One platform covering the entire maritime domain**
- **The current, maritime threat landscape**
- **Cases & Demonstrations:**
  - Rendezvous – Expose criminal intent
  - Shedding light on the Dark Fleet
  - AIS turned off – other data sources
- **Detect, Investigate, Act and Prevent**
- **Key takeaways**
- **Q & A session**

## Presenters

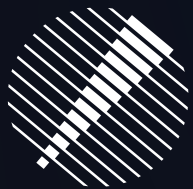


**Morten Christian  
Larsen**  
*Project Manager*  
[mcl@gatehouse.com](mailto:mcl@gatehouse.com)



**Jacob Brosbøl  
Sørensen**  
*Commercial Director*  
[jbs@gatehouse.com](mailto:jbs@gatehouse.com)





We are

# Gatehouse Maritime

Trusted technology provider aiding governments and organizations in the monitoring and protection of maritime critical infrastructure and national waters.



+25 years of experience providing safety and visibility to the maritime community

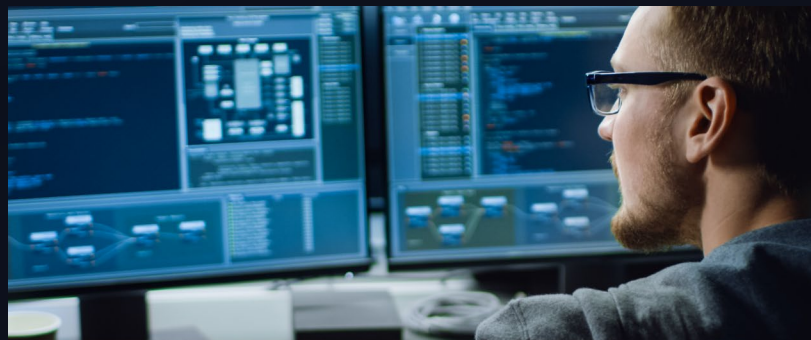


Market leading experts in visualization of advanced data streams giving optimal overview of critical scenarios



Trusted and praised by Maritime Guardians Worldwide for our reliability and quality of data.

[gatehousemaritime.com](https://gatehousemaritime.com)



# Trusted by



**DANISH MARITIME AUTHORITY**

**DanPilot**



**US Army Corps  
of Engineers®**

**tusass**



**L3HARRIS™**

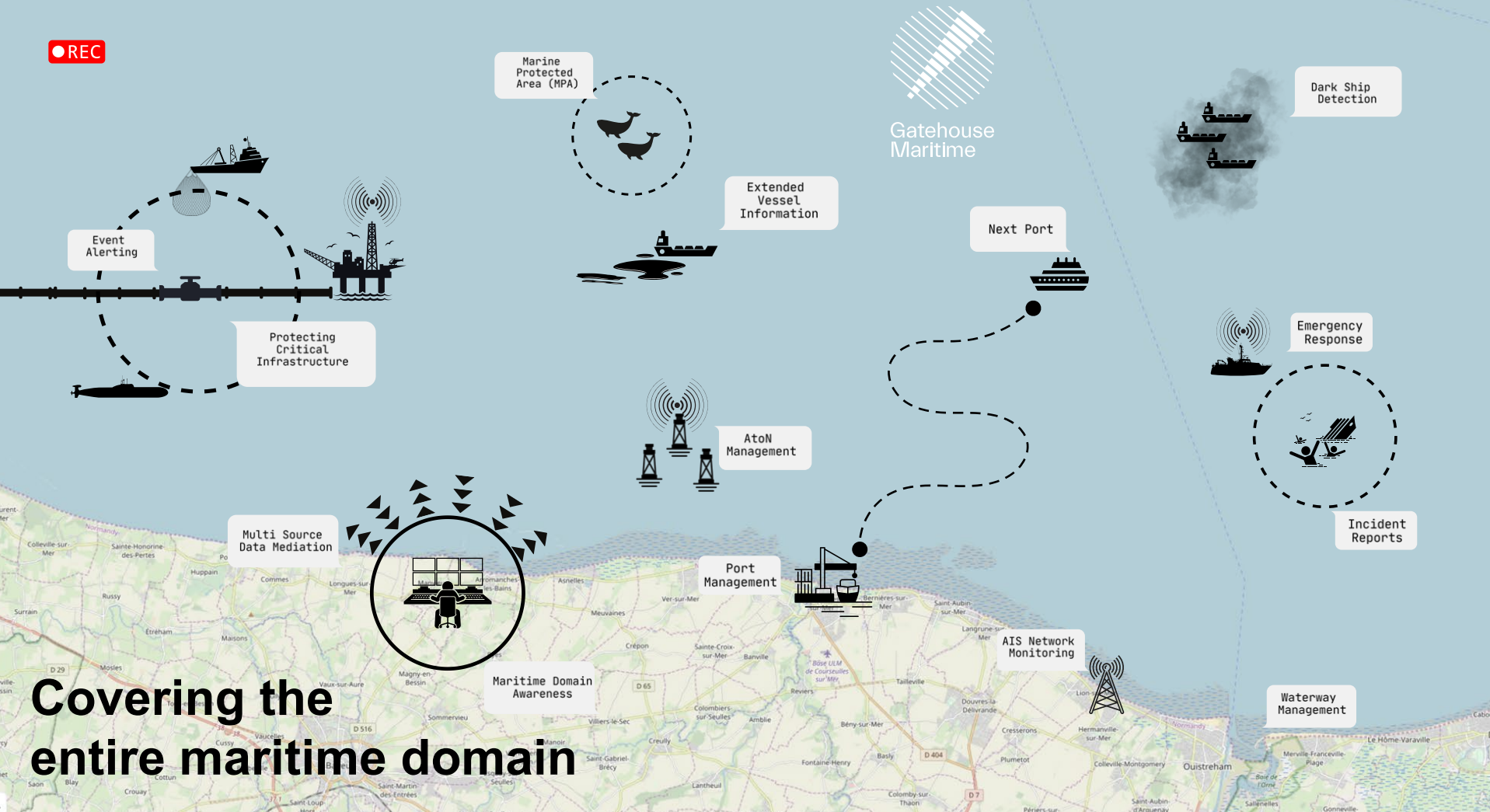


**BALTIC PIPE  
PROJECT**



*Irish Coast Guard*





**Covering the entire maritime domain**

Maritime Domain Awareness

# Current Maritime Threat Landscape

- Increasing incidents of subsea cable damage and sabotage.
- Suspicious vessels surveilling critical maritime infrastructure.
- Dark Fleet ships infiltrating EEZs and seeking port entry.
- Rising smuggling and illicit maritime activities.
- Vessels going dark – disabling AIS to evade detection.



# The EU action plan

## The Joint Communication has four objectives



### Prevention

To reduce the number and impact of disruptive incidents and make it more difficult for any malicious actor to put the security of the Union at risk.



### Key actions

Stepping up security requirements and risk assessments on submarine cables and prioritising funding into the deployment of new and smart cables allowing to increase redundancies and therefore resilience.



### Detection

Rapid and real-time detection has proven to be one of the foundations to counter sabotage against submarine cables.



### Key actions

Enhancing threat-monitoring capabilities per sea basin to build a comprehensive situational picture and allow earlier alerts and responses.



### Response and Recovery

Reducing time to respond and repair will strength resilience and act as deterrence.



### Key actions

Improving the efficiency of the EU-level crisis framework for swift action on incidents impacting submarine cables and establishing an EU Cable Vessels Reserve to shorten the time to repair damaged cables.



### Deterrence

The EU intends to raise costs on the side of malicious actors, with tools to qualify, prove, attribute formally and sanction sabotaging actions.



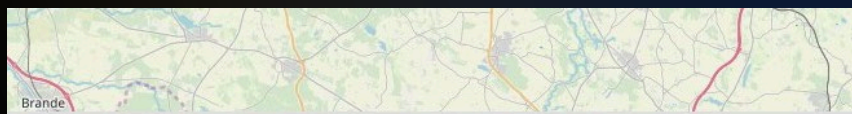
### Key actions

Enforcing sanctions and diplomatic measures against hostile actors and the 'shadow fleet', making full use of the Hybrid Toolbox to address hybrid campaigns, and fostering 'cable diplomacy' with global partners.

# Use Case Demonstrations

- Detection of dark fleets through extended vessel data.
- If AIS is turned off – what then?
- Using multiple data sources to gather resilient intelligence.
- Using real-time alerts to intercept potential threats.
- Analysis of rendezvous cases in restricted zones.

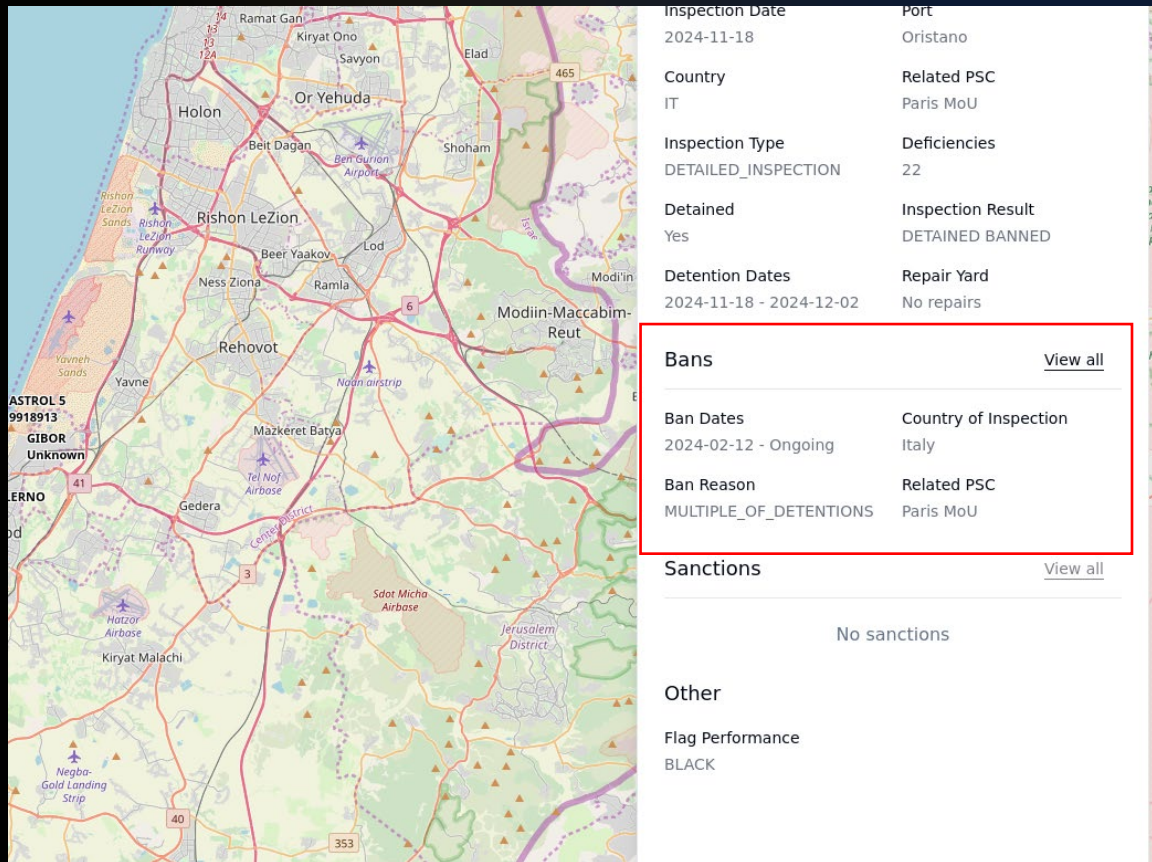
# Shedding light on the Dark Fleet – Flag Switching



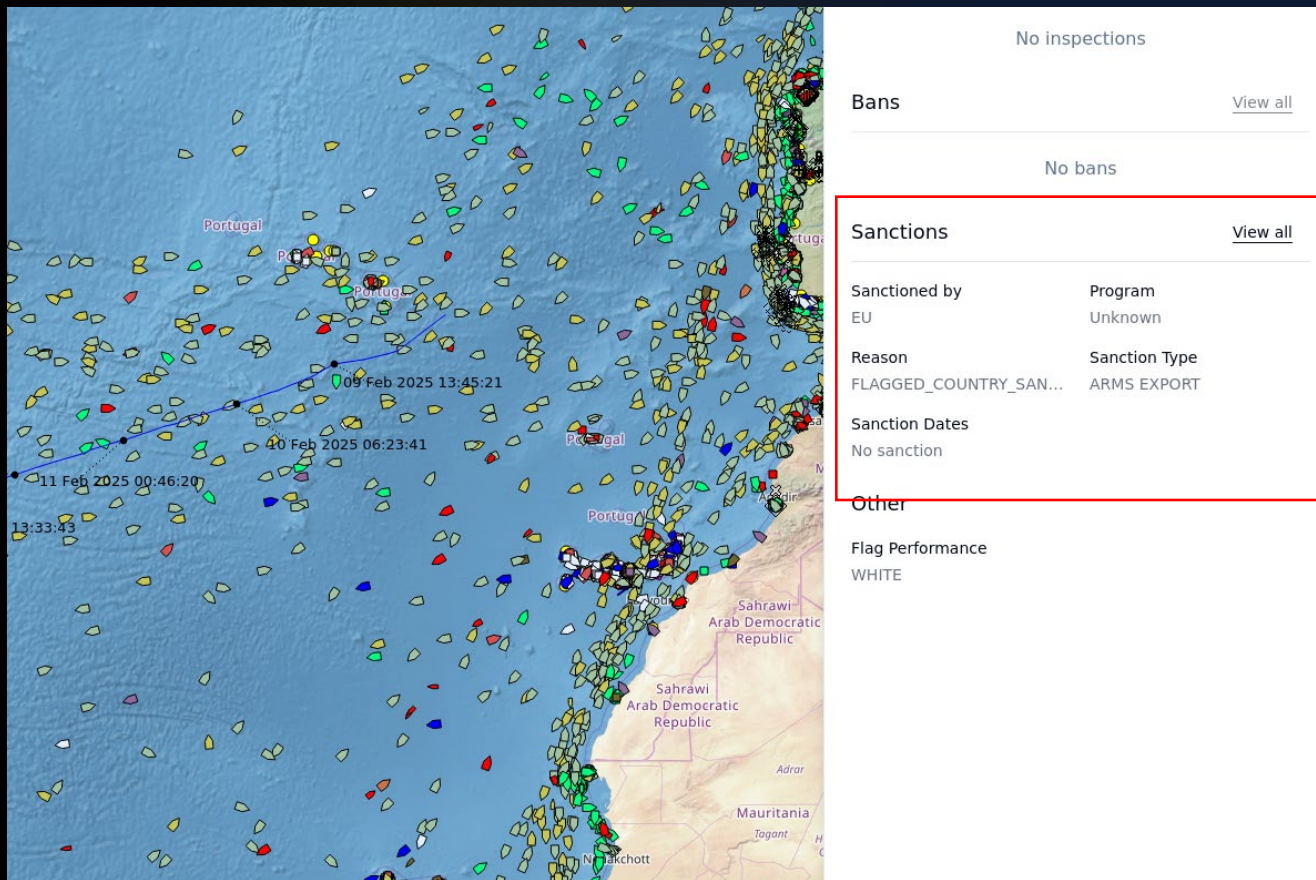
MMSI\_FLAG\_SWITCHING - MMSI\_FLAG\_SWITCHING (31 Jul 2024 22:00 UTC - 07 Oct 2024 21:59 UTC)

imo	prev_mmsi	new_mmsi	prev_country	new_country	switch_time
9556870	248190000	311001558	Malta	Bahamas	2024-08-06 16:05:16
9842736	538008342	636024101	Marshall Islands	Liberia	2024-08-07 21:30:08
9309289	710006297	210346000	Brazil	Cyprus	2024-08-09 02:08:00
9347085	352980769	304928000	Panama	Antigua and Barbuda	2024-08-09 02:19:02
9855563	371282000	255915807	Panama	Portugal	2024-08-09 02:30:30
9657765	258672000	725005178	Norway	Chile	2024-08-09 03:33:46
9353113	626320000	677020400	Gabon	Tanzania, United Republic of	2024-08-09 04:14:56
9494101	538010543	311001557	Marshall Islands	Bahamas	2024-08-09 04:45:00
9762742	345070035	538011243	Mexico	Marshall Islands	2024-08-09 05:26:16
9538658	338679000	256981000	United States	Malta	2024-08-09 05:26:22
9431056	249446000	511101515	Malta	Palau	2024-08-09 06:14:34
8928480	577031000	268241601	Vanuatu	San Marino	2024-08-09 06:14:50
9320520	244850853	352004221	Netherlands	Panama	2024-08-09 06:14:59
9703813	636022552	256868000	Liberia	Malta	2024-08-09 06:15:14
9114725	256341000	305665000	Malta	Antigua and Barbuda	2024-08-09 06:15:24
9076260	511101495	273379740	Palau	Russian Federation	2024-08-09 06:15:26
9733117	538010484	249010000	Marshall Islands	Malta	2024-08-09 06:15:42
9764051	257497000	636024251	Norway	Liberia	2024-08-09 06:15:51
9266322	371529000	314777000	Panama	Barbados	2024-08-09 06:16:25
9376725	232055748	503170260	United Kingdom	Australia	2024-08-09 06:16:41
9339325	626391000	314889000	Gabon	Barbados	2024-08-09 06:17:13
9296303	563205100	352004133	Singapore	Panama	2024-08-09 06:17:14
9815329	244170427	255915755	Netherlands	Portugal	2024-08-09 06:17:32
9936587	230999997	503000241	Finland	Australia	2024-08-09 06:17:41
9294666	241759000	538011242	Greece	Marshall Islands	2024-08-09 06:17:47

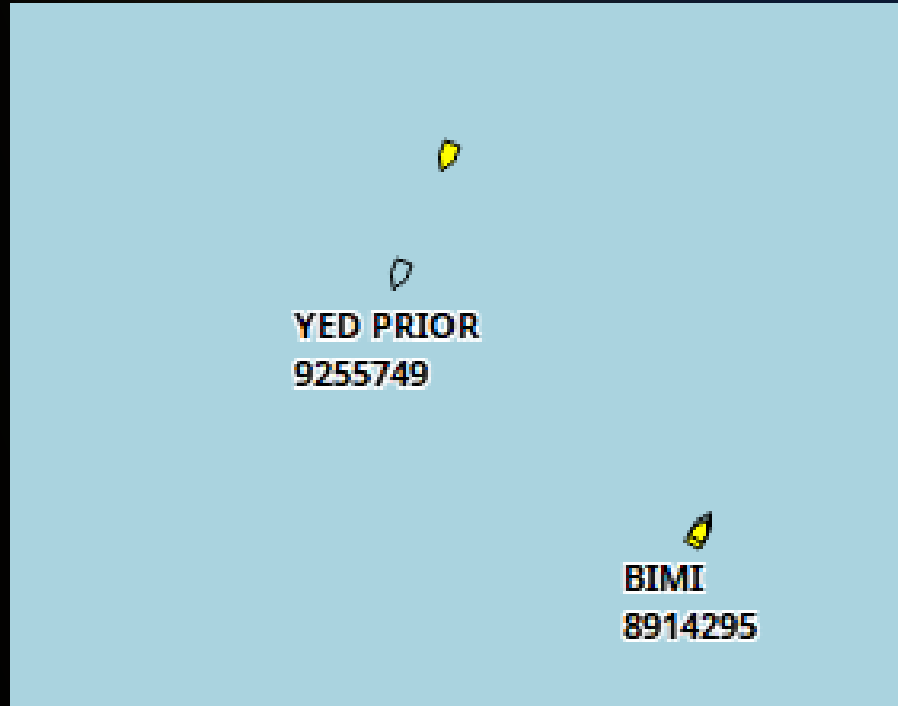
# Shedding light on the Dark Fleet – Banned or not?



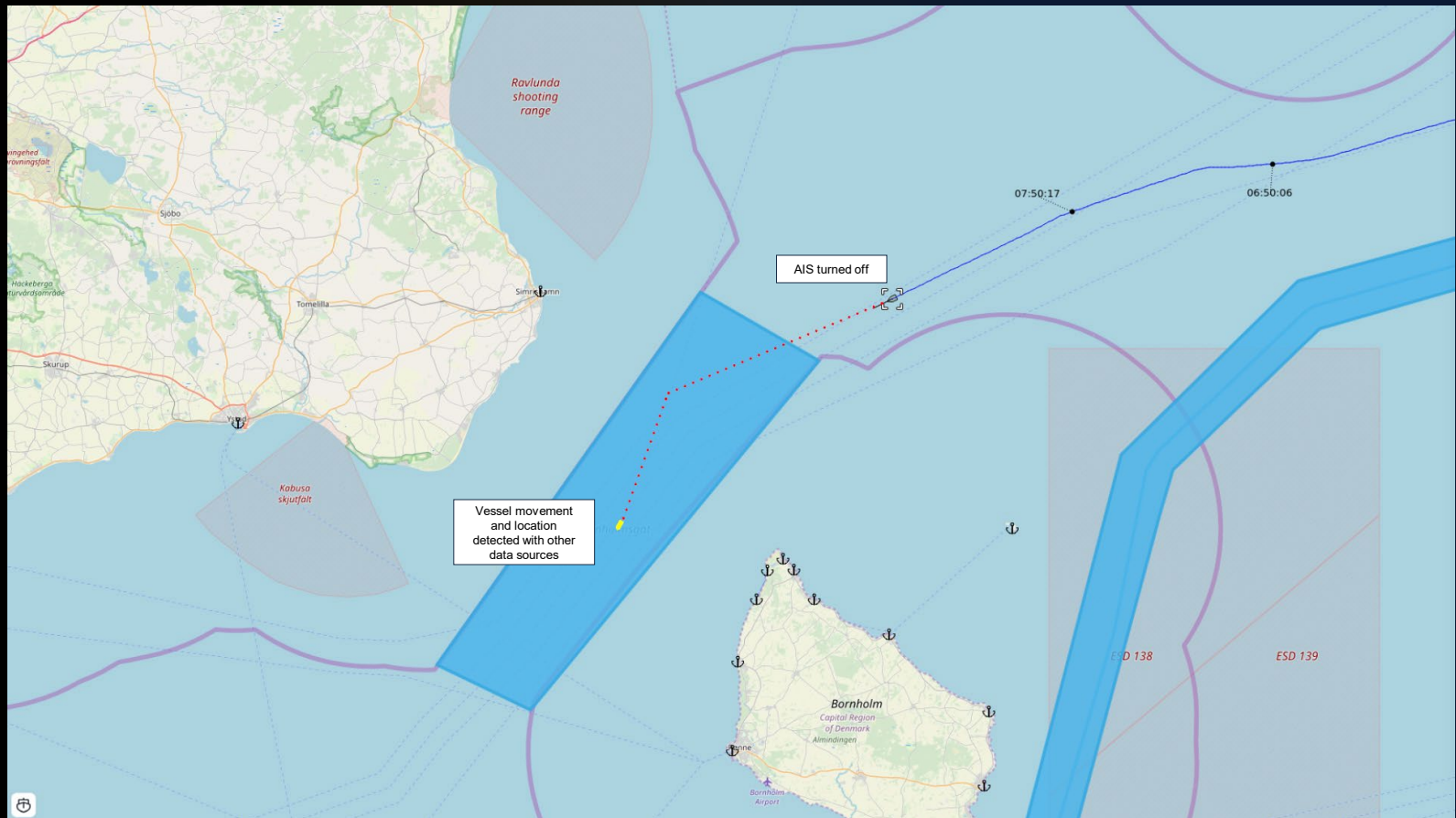
## Shedding light on the Dark Fleet – Sanctioned



## Dark ships – What happens if AIS is turned off?



# Real-time alerts using multiple types of datasources



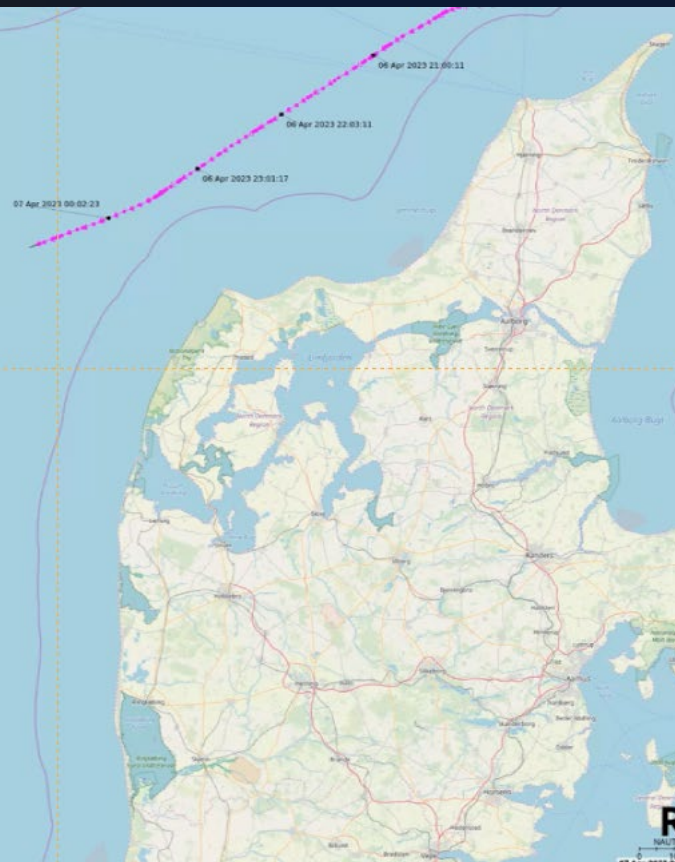
# Use pattern detection and event alerting to minimize risks




# Rendezvous – Expose potential criminal intent

Blue data set:  
Dutch fishing  
trawler waiting for  
hours in the night


See full video of this feature in  
the webinar



# Detect, Investigate, **Act** & Prevent




Utilizing advanced AIS tracking and anomaly detection to **detect** suspicious behavior



Leveraging the Extended Vessel Information tool to **investigate** and uncover the story behind suspicious vessels



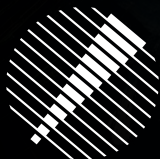
Implementing real-time event detection for **immediate responses**



Proactive strategies for **long-term threat mitigation** and security improvement

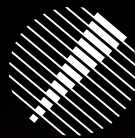
# Key Takeaways

- A demand for increased maritime monitor and protection
- The importance of identifying and monitoring dark fleet activities
- The significance of anomaly detection in maritime security
- Best practices for using extended vessel information to assess risks
- How to act on real-time alerts to prevent threats and protect national waters



Gatehouse  
Maritime





Gatehouse  
Maritime

# Q&A



**Please use chat to send questions  
for our experts to answer.**

# Thank you for participating

Want a demonstration or do you have a question?  
Please reach out to one of our Maritime Advisors.



**Ulrik Høy-Petersen**  
*Sales Manager*  
[uhp@gatehouse.com](mailto:uhp@gatehouse.com)

Call: +45 311 464 95



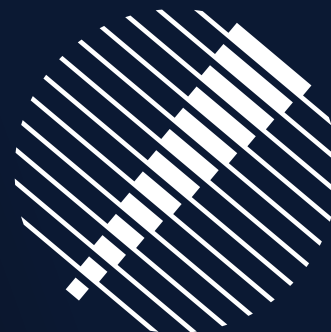
**Jacob Brosbøl**  
*Commercial Director*  
[jbs@gatehouse.com](mailto:jbs@gatehouse.com)

Call: +45 604 083 22



**Joel Box**  
*Commercial Director (US)*  
[jbo@gatehouse.com](mailto:jbo@gatehouse.com)

Call: +1 256 658 8633



**Gatehouse  
Maritime**

[Gatehousemaritime.com](https://gatehousemaritime.com)